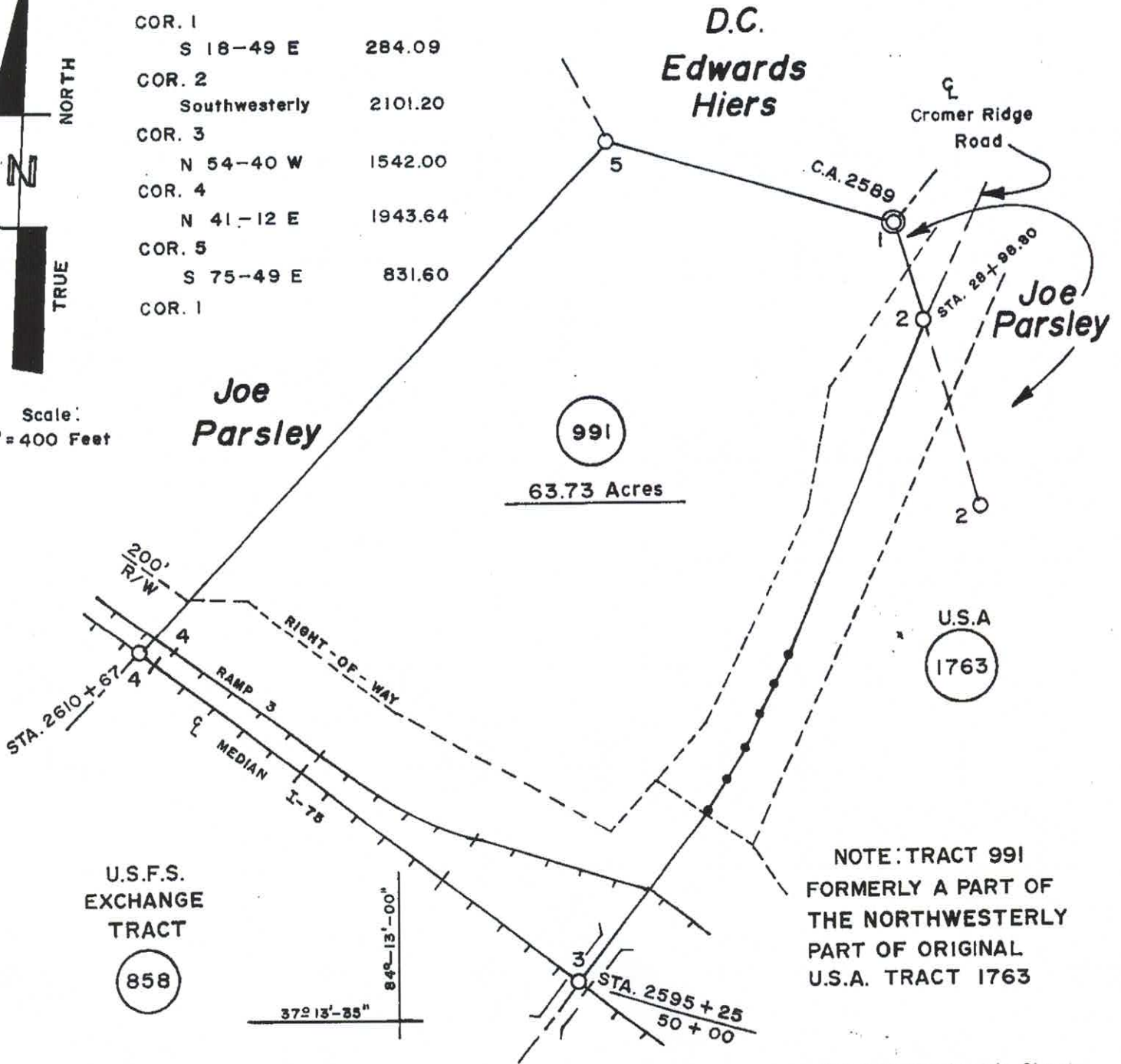




COR. 1	S 18-49 E	284.09
COR. 2	Southwesterly	2101.20
COR. 3	N 54-40 W	1542.00
COR. 4	N 41-12 E	1943.64
COR. 5	S 75-49 E	831.60
COR. 1		

Scale:
1" = 400 Feet



U.S.F.S.
EXCHANGE
TRACT

858

NOTE: TRACT 991
FORMERLY A PART OF
THE NORTHWESTERLY
PART OF ORIGINAL
U.S.A. TRACT 1763

Tract On Quadrangle Sheet
Bernstadt 6-19

U.S.A. Tract 991 Laurel County, Kentucky

5430 - Exchange
 Daniel Boone - London
 United States Of America - Tract 991
 (Laird T. Orr - Tract 984)

Survey: U.S.F.S. 1936
 Books: N-11, SD-124
 Plat: L.T.H. 6-21-82

Checked: *D.S.B.* 7/10/82.
 Approved: *[Signature]* PE
 FOREST ENGINEER